

# APPLICATIONS OF THERMAL IMAGING CAMERA



## BALTECH TR

INDIAN DISTRIBUTOR:

ROKADE ROTEK INDIA PVT. LTD

R-375 TTC INDL AREA RABALE NAVI MUMBAI

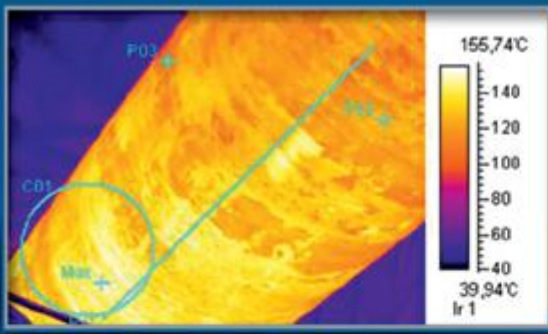
022 - 2173 7777 / +91 8898886622

e-mail: [sales@rokadegroup.com](mailto:sales@rokadegroup.com)

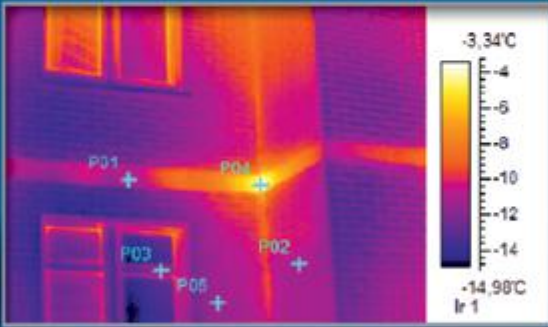


# BALTECH

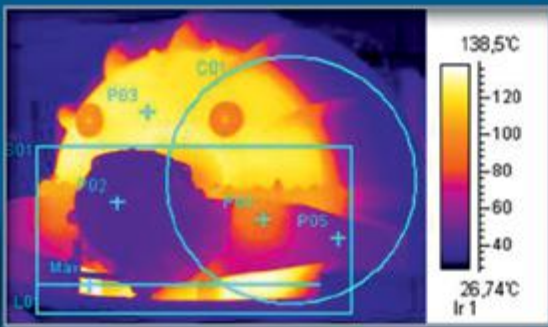
RELIABILITY TECHNOLOGIES



**KILNS**



**ENERGY AUDIT**



**HYDRAULICS, COMPRESSORS,  
TURBINES, PUMPS, FANS**

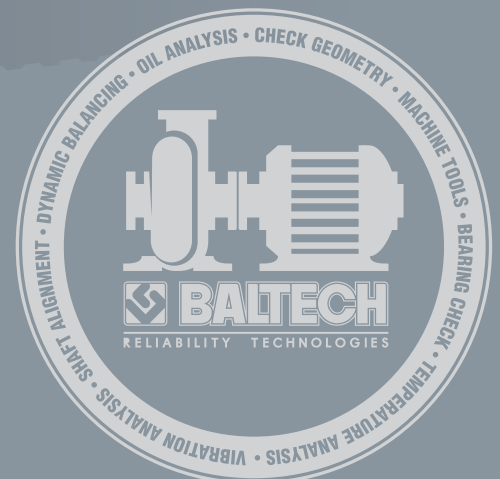
**BALTECH TR INFRARED CAMERAS APPLICATION**

**YOU WILL SEE EVERYTHING!**

**WHY DO WE RECOMMEND  
BALTECH TR INFRARED CAMERAS?**

- EXCELLENT THERMAL IMAGE QUALITY
- EASY TO USE
- RELIABILITY
- SAFETY
- EFFICIENCY
- SMALL SIZE AND LOW WEIGHT
- LOW PRICE

**BALTECH TR-01100  
BALTECH TR-01400**



# ADVANTAGES

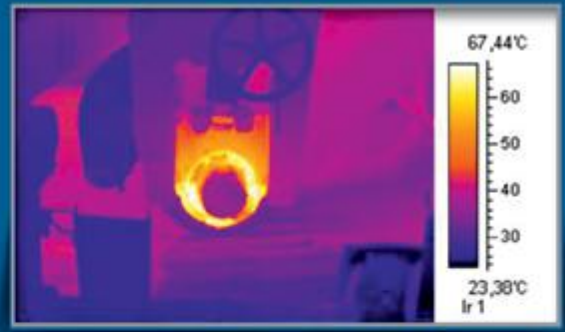
## OF BALTECH TR SERIES INFRARED CAMERAS

- Excellent thermal image
- High accuracy temperature measurement
- Folding and 270°rotatable display
- Auto/Motor focus for one-hand operation
- Wide temperature measurement range
- Laser pointer
- Bright LED light
- Built-in digital camera
- Built-in microphone to record 40sec. voice annotation
- Wide-angle and telephoto IR lens (interchangeable)
- Scalable P-I-P and Thermal fusion
- Automatic Hot/Cold/Average temperature detection
- Real-time thermal video transfer to PC via USB and remote transfer via MSN and Skype
- Intuitive and easy operating menu
- Analysis software

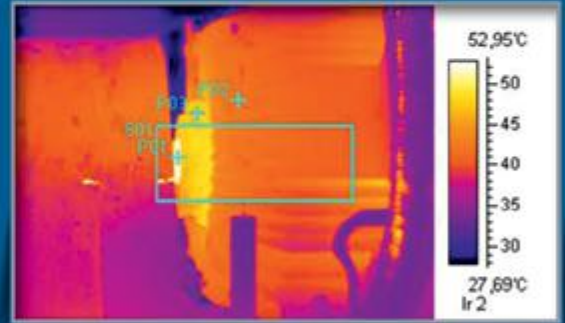
**BALTECH TR-01200**  
**BALTECH TR-01500**



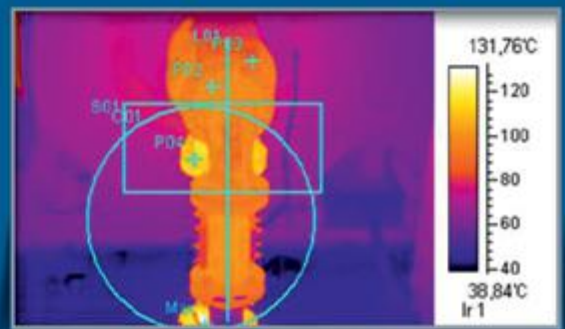
**BALTECH TR INFRARED CAMERAS APPLICATION**



**BEARINGS**



**ELECTRICAL MOTORS**



**ELECTRICAL EQUIPMENT**

rotatable display

BALTECH TR Series infrared cameras are reliable noncontact devices that are intended to analyze and display a thermal field (temperature) distribution on the object surface fast and accurately. IR imaging technology provides a great cost saving of our clients all over the world. BALTECH offers the infrared cameras with a state-of-the-art focal plane array technology, that provides accurate temperature measurement and professional image processing.

	TECHNICAL DATA	BALTECH TR-01100	BALTECH TR-01200	BALTECH TR-01400	BALTECH TR-01500	
Imaging	display	3.5" color LCD	3.5" 270° color rotatable LCD	3.5" color LCD	3.5" color 270° rotatable LCD	
	image modes	thermal image, visual image	thermal image, visual image, thermal fusion, picture-in-picture, thumbnail gallery	thermal image, visual image	thermal image, visual image, thermal fusion, picture-in-picture, thumbnail gallery	
	thermal fusion		IR image shown above, below or within temp interval on visual image		IR image shown above, below or within temp interval on visual image	
	picture in picture		Resizable and movable IR area on visual image		Resizable and movable IR area on visual image	
	frequency	50/60Hz				
	focus	Manual	Auto/manual	manual	Auto/manual	
	electronic zoom	2X				
	digital zoom		2x1-2X Continuous		1-2X Continuous	
	digital camera		2.4 mega pixel		2.4 mega pixel	
lamp		14cd/m2		14cd/m2		
Detector	detector type	Uncooled FPA, 160x120 pixels		Uncooled FPA, 384x288 pixels		
	pixel pitch	25µm				
	spectral range	8-14µm				
	field of view	21°x 16°/ 0.15m (standard lens) 35°x 27° x 0.05 m (wide lens, optional) 4° x 3°/0.8m (telephoto lens, optional)	21°x 16°/ 0.15m (standard lens) 42° x 32° x 0.1 m (wide lens, optional) 10° x 8°/1m (telephoto lens, optional)	18°x 14°/ 0.15m (standard lens) 30° x 23° x 0.05 m (wide lens, optional) 9° x 6°/0.8m (telephoto lens, optional)	21°x 16°/ 0.4m (standard lens) 38° x 28° x 0.3 m (wide lens, optional) 11° x 8.5°/1.2 m (telephoto lens, optional)	
	spatial resolution	2.3mrad				
	sensitivity	0.1°C at 30 °C	<0.05 °C at +30 °C	0.1 °C at 30 °C	<0.065 °C at +30 °C	
Measurement	temperature measurement range	-20°C ... +350°C -20°C ... +700°C -20°C ... +1100°C -20°C ... +1200°C	-20°C ... +350°C -20°C ... +700°C -20°C ... +1100°C -20°C ... +1200°C	-20°C ... +350°C -20°C ... +700°C -20°C ... +1100°C -20°C ... +1200°C	-20°C ... +350°C -20°C ... +700°C -20°C ... +1100°C -20°C ... +1200°C	
	temperature measurement accuracy	±2C or ±2% of reading				
	measurement spots	4 adjustable spot				
	measurement area	3 adjustable boxes with max./min./average				
	line profile	horizontal/vertical				
	isotherm analysis	detect high/low temperature/interval				
	alarm	voice and color				
	emissivity correction	variable from 0.01~1.0				
	color palettes	12 colors				
	parameter setting	date/time, temperature units °C/°F/K, language, scale				
	calibration	automatic, based on inputs				
	storage type	built-in memory card	2G SD card, Built-in memory card	built-in memory card	2G SD card, Built-in memory card	
	storage capacity	up to 1500 images	Up to 7000 images on 2G SD card	up to 1500 images	up to 6500 images on 2G SD card	
	storage format	Standard JPEG				
voice annotation	40 seconds voice recording per image (built-in microphone)					
periodic image storage	user defined, 6 seconds at least					
Laser pointer	laser type	Class II, 1mW/635nm red				
Power System	battery	Rechargeable Li-ion ,3 hours operating time				
	charging system	In camera or AC adapter				
	AC supply	90-260 AC V, 50/60Hz, 5 DC V				
	voltage	12V±5%	5V±5%	DC12V±5%	5V±5% DC	
power management	Automatic shutdown (user selectable)					
Operation conditions	operating temperature range	-20°C ~ +50°C				
	storage temperature range	-40°C ~ +70°C				
	humidity (operation and storage)	≤ 90 (non-condensation)				
	IP level	IP 67				
	shock	25G IEC68-2-29				
vibration	2G IEC68-2-26					
Physical Data	size (LxWxH)	320 x 90 x 90 mm	125 x 60x 160 mm	320 x 90 x 90 mm	125 x 60x 160 mm	
	weight ,incl. battery and standard lens	660 g	450 g	660 g	450 g	
	tripod	1/4" _20				
Interfaces	audio output	yes				
	external interface	external DC input		external DC input		
	video output	PAL / NTSC				
usb	Data transfer to and from PC					
Language	10 languages (Russian, English, French, Italian, German, Spanish, Portuguese, Korean, Japanese, Chinese)					
Delivery set	standard	Infrared camera with a standard lens, 2 li-ion batteries, battery charger, adapter, video cable, USB cable, software on CD, operation manual, warranty certificate, transportation case				
	option	li-ion battery, IR lenses, tripod				
	TECHNICAL DATA	BALTECH TR-01100	BALTECH TR-01200	BALTECH TR-01400	BALTECH TR-01500	